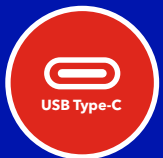




Magnetic wireless charging



Supports PD & QC 3.0



Charge 2 devices



Compact design

Charging On-the-Go

Verbatim Charge 'n' Go Magnetic Wireless Power Bank 10000mAh with a slim 15mm body offer maximum portability.

It boasts 15W Magnetic Wireless Charging, PD20W capabilities, and a Bi-directional Type-C port for swift charging. The LED indicator ensures easy power tracking.

Ideal for travel, commuting, events, and outdoor activities, Verbatim Power Packs provide a reliable on-the-go energy source.

Crucial for professionals relying on devices for work, it ensures continuous productivity during meetings, presentations, and business trips. For outdoor enthusiasts, it's essential for keeping devices charged during camping, hiking, or any adventure, ensuring connectivity and capturing memories.

Experience the future of portable charging.

| General Information | |
|----------------------------------|--|
| Material | Metal+ABS |
| Colour | Black / Green / Blue / Pink / Grey |
| Product dimensions | 105mm x 67mm x 16mm |
| Product weight | 187g |
| Cable | USB-C to USB-C, 30 cm |
| Specifications | |
| Input | USB-C PD 3.0 Input: 5 V=2.4 A, 9 V=2.0 A (18 W max) |
| Output | USB-C PD 3.0: DC 5V=2.4A, 9V=2.22A, 12V=1.67A (20W max) Wireless: 5W, 7.5W, 10W, 15W Shared: 10W |
| Output Wireless charge Specs | 5V=1.0A, 7.5V=1.0A, 9V=1.66A (15W) |
| Wireless distance | 3mm - 6mm |
| Supported charging protocols | PD 3.0, QC 3.0, Apple2.4A, BC1.2, DCP, AFC |
| Total Max Output Specs | 20W |
| Chemistry of battery | Li-polymer battery cell |
| Voltage range | 3.0V-4.35V |
| Energy | 37Wh |
| Battery Nominal capacity (mAh) | 10000mAh |
| Rated Capacity | Around 6000mAh (Based on 5V-2.4A output) |
| Other Features | |
| ON/OFF Switch | Yes |
| LED status | Green = Fast Charging, Blue = Wireless charging, Blue flashing= the power Pack has detected a foreign object on charging area and stopped the wireless charging for safety protection. |
| Charging LEDs | 4 LEDs: White = 25% / 50% / 75% / 100% charge remaining |
| Storage and Operating Conditions | |
| Operating Temperature | 0°C ~ +45°C |
| Storage Temperature | Under normal temperature conditions:-10°C - 45°C; charging and discharging every 3-4months |
| Operating Humidity | 10% ~ 85% RH (no condensation) |
| Certificates and declarations | |
| Conformity | EAC/CE/UKCA/FCC |
| Safety | RoHS/REACH |
| Electromagnetic compatibility | 2014/30/EC |
| Low voltage protection | 2014/35/EC |
| Radio Equipment Directive (RED) | 2014/53/EC |
| RoHS directive | 2011/65/EC |
| Annex II | 2015/863/EC |

Charge 'n' Go

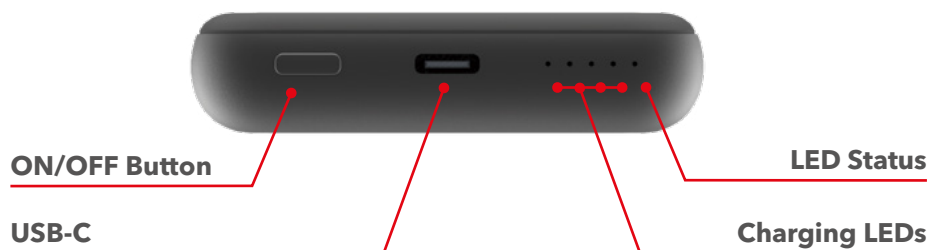
Magnetic Wireless Power Bank

10000 mAh

Verbatim
Technology you can trust

| PN | Description | Bar Code | EAN128 Code | EAN14 Code |
|-------|---|--------------|--|----------------------------------|
| 32245 | Verbatim Charge 'n' Go Magnetic Wireless Power Bank 10000 Black | 023942322450 | (02)00023942322450(37)10(91)843 (02)00023942322450(37)20(91)843 | 20023942322454 50023942322455 |
| 32246 | Verbatim Charge 'n' Go Magnetic Wireless Power Bank 10000 Green | 023942322467 | (02)00023942322467(37)10(91)843 (02)00023942322467(37)20(91)843 | 20023942322461 50023942322462 |
| 32247 | Verbatim Charge 'n' Go Magnetic Wireless Power Bank 10000 Blue | 023942322474 | (02)00023942322474(37)10(91)843 (02)00023942322474(37)20(91)843 | 20023942322478 50023942322479 |
| 32248 | Verbatim Charge 'n' Go Magnetic Wireless Power Bank 10000 Pink | 023942322481 | (02)00023942322481(37)10(91)843 (02)00023942322481(37)20(91)843 | 20023942322485 50023942322486 |
| 32249 | Verbatim Charge 'n' Go Magnetic Wireless Power Bank 10000 Grey | 023942322498 | (02)00023942322498(37)10(91)843 (02)00023942322498(37)20(91)843 | 20023942322492 50023942322493 |

| Logistic Information | |
|-----------------------------------|--|
| Product Dimensions L x W x H | 105x67x16 mm |
| Product Weight | 187 grams |
| Units per Pack | 1 |
| Pack Dimensions L x W x H | 90x30x128 mm - with hanger 90x30x158mm |
| Pack Weight | 247 grams |
| Units per Inner Carton | 10 |
| Inner Carton Dimensions L x W x H | 275x180x118 mm |
| Inner Carton Weight | 2600 grams |
| Units per Outer Carton | 20 |
| Outer Carton Dimensions L x W x H | 290x200x266 mm |
| Master Cartons Weight | 5500 grams |
| Master Cartons per Layer | 12 |
| Layers per Pallet | 5 |
| Units per Pallet | 1200 |



Charge 'n' Go

Magnetic Wireless Power Bank

10000 mAh

VerbatimTM

Technology you can trust



32245 - Front Angled



32245 - Packaging 3D



32246 - Front Angled



32246 - Packaging 3D



32247 - Front Angled



32247 - Packaging 3D



32248 - Front Angled



32248 - Packaging 3D



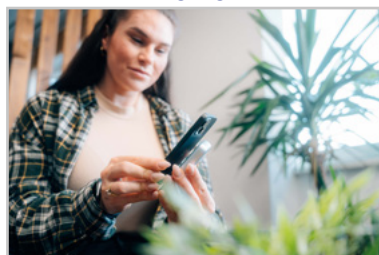
32249 - Front Angled



32249 - Packaging 3D



Lifestyle 1



Lifestyle 2

System Requirements:

- USB-C port

Pack Contents:

- Verbatim Charge 'n' Go
- Metallic ring
- USB-C to USB-C cable
- Quick Start Guide

Publication date: 07-03-2024

© 2024 Verbatim. All rights reserved.

All brand names are registered trademarks of their respective owners.
USB Type-C® and USB-C® are registered trademarks of USB Implementers Forum.

Unauthorized use strictly prohibited.

Specifications are subject to change without prior notice.